

**ITEM  
15-721**

## Dual Band / Dual Polarized Omni Directional Antenna

### 2.4/ 5.8 GHz 11 dBi Dual Band / Dual Polarized Omni Directional Antenna

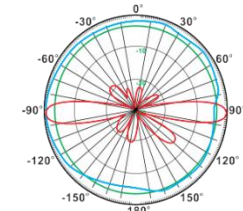
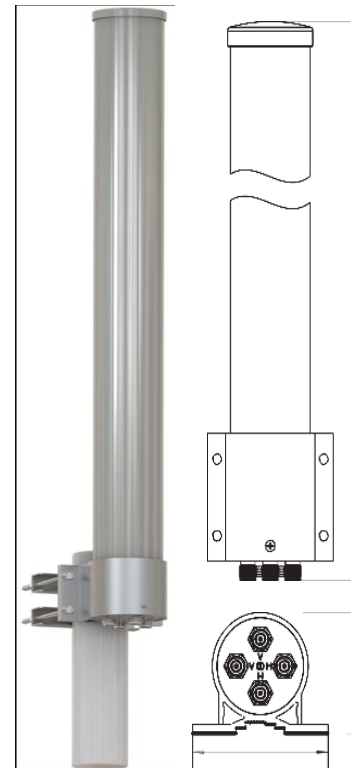
This dual band, dual Polarized outdoor Omni antenna is design for supported 2.4/5.8 GHz IEEE 802.11a/b/g and 802.11ac applications. It supports 1x2, 2x2 and 4x4 MIMO AP/Routers.

#### **Electrical Specification:**

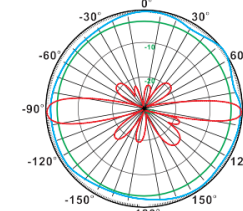
Frequency (MHz):	2400-2500	5150-5850
Gain:	10dBi	12dBi
VSWR:	<1.8 : 1	<2.0 : 1
Polarization:	Horizontal and Vertical	
Horizontal Beamwidth:	360°	
Vertical Beamwidth:	12°	7.2°
Isolation:	>30dB	
Cross-Polar Ratio:	>20dB	
Nominal Impedance:	50 Ohm	
Max Input Power:	100W	
Lightning Protection:	DC Ground	

#### **Mechanical Specification:**

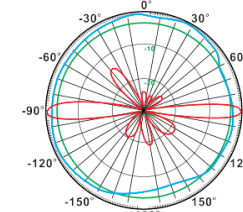
Connector:	(4) N Female
Dimensions (diameter*length) :	3.3in * 47.24
Weight:	8.4LB
Radome Material:	UV Resistance PVC
Mounting Mast Size:	1.57in * 2.36in
Rated Wind Velocity:	130mph (210Km/h)
Operation Temperature:	-40°C to +65°C



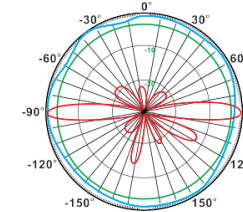
V-Pol 2.4-2.5GHz



H-Pol 2.4-25GHz



V-Pol 5.1-5.8GHz



H-Pol 5.1- 5.8GHz

