

Item
15-544

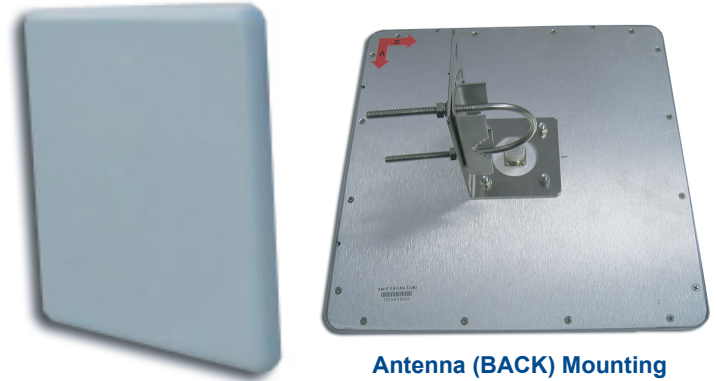
Patch Antenna, 5.8GHz, 22dBi

Electrical Specification

Frequency Range:	5.725 - 5.85GHz
Gain:	22.5 dBi
Horizontal Beamwidth:	8°
Vertical Beamwidth:	8°
Front/Back Ratio:	>25 dB
Polarization:	Vertical or Horizontal
VSWR:	≤1.5
Impedance:	50 Ohms
Max. Input Power:	50W
Connector:	N Type Female
Lightning Protection:	DC Ground

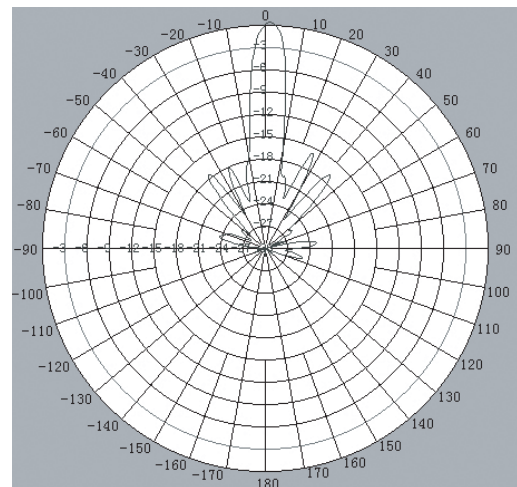
Mechanical Specification

Length:	12"
Width:	12"
Depth:	0.8"
Weight, incl. bracket	4 lbs
Radome:	ABS
Wind Survivability:	210 km/h
Operating Temperature:	-40°C to 60°C
Mounting Kit/Style:	Included/Pole & Wall
Additional Features:	UV Resistant

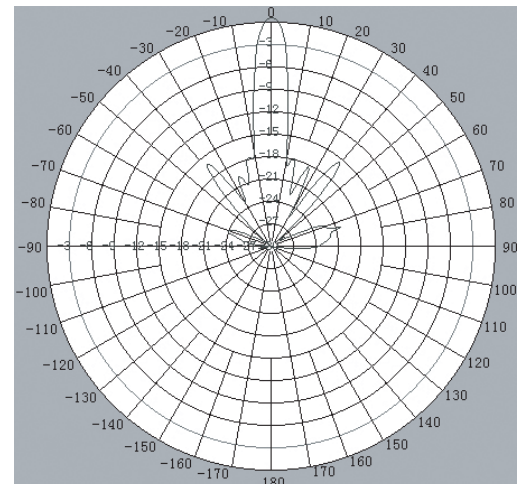


Antenna (BACK) Mounting

H Plane Radiation Pattern



E Plane Radiation Pattern



TELETRONICS
INTERNATIONAL INC.

Teletronics International, Inc.
2 Choke Cherry Road
Rockville, MD 20850

Tel: 301.309.8500
Fax: 301.309.8851
www.teletronics.com