



# EZP-F EZPlatform® – Fiber

## AP/Hotspot/Repeater activated by Fiber

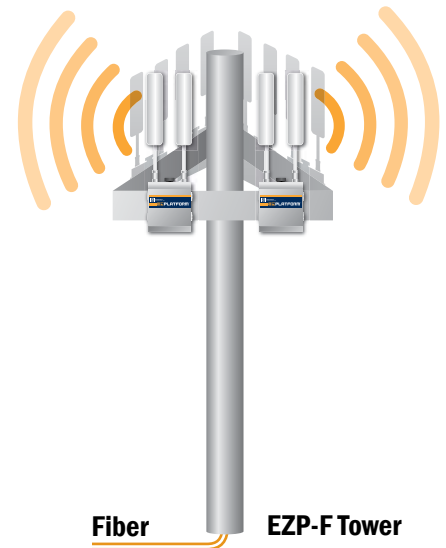
Teletronics' EZPlatform® AP/Hotspot/Repeater is designed for high-power access point, hotspot and repeater applications. A powerful end-to-end system for a wireless Internet network can be built by integrating the EZPlatform® with Teletronics TT™ subscriber units and other radios. The simplicity of use of the EZPlatform® allows operators to quickly bring service to their customers, and with its two serial ports and two Ethernet ports the unit can easily incorporate GPS, GPRS, RFID, VoIP, surveillance cameras, field meters, motion sensors and data networks for multiple industrial and commercial applications. The EZPlatform® is available in single or dual radio configuration, with 1 W (2.4 GHz) and 600 mW (2.4/5.8 GHz) radio card options.



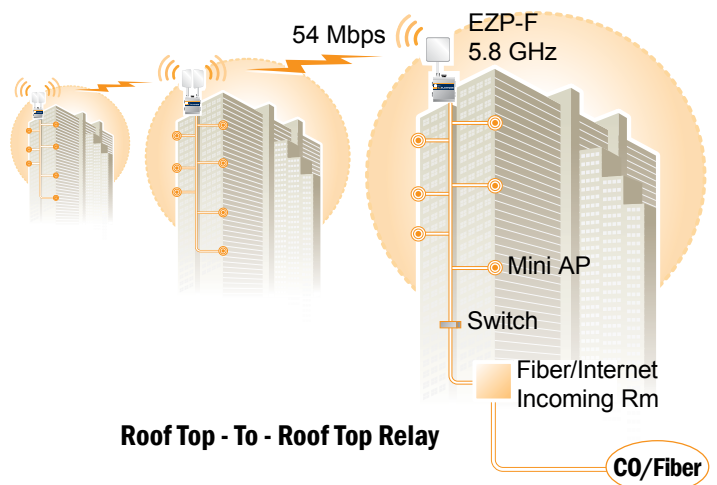
item #: 11-310

Product model	Optical wavelength (nm)	Transmitting optical power (dBm)	Receiving sensitivity (dBm)	Saturability (dBm)
Single Fiber SM 25 Km	1310/1550, 1550/1310	-6 - 10	-23	≥ -3
Dual Fiber/MM 2km	1310	-10 ~ -4	-17	≥ -3
Dual Fiber/SM 25km	1310	-10 ~ -6	-23	≥ -3

<b>Ethernet</b>	IEEE 802.3 10BASE-T/100BASE-TX with autonegotiation
<b>Networking</b>	Bridging mode, NAT gateway, static routing, RIPv2 dynamic routing. DHCP client, DHCP server. Static/dynamic VLAN, IEEE 802.1Q, management VLAN, SSID-based tagging. PPPoE, DDNS, STP, QoS (802.11e and WMM), IPv6
<b>Wireless</b>	802.11a/b/g (2.4/5.8 GHz, 700/900 MHz), turbo mode. Four SSIDs per interface, AP/client mode, ad hoc, WDS, roaming. WEP, WPA, WPA2 encryption with hex/ASCII keys. Adjustable RF TX power and data rate. Hotspot: WiFiDog/RADIUS authentication, local/remote captive portal
<b>Management</b>	HTTP/HTTPS web configuration interface, TELNET. SNMPv2, remote syslog, local event log. Bandwidth control with default and host-specific upload/download rates. Configuration backup and restore, web-based firmware upgrade. Serial port rescue console, EZManager support
<b>Security</b>	IP address, MAC address and SSID filtering Firewall, intra-BSS traffic blocking, wireless-wired matching. 802.1X
<b>Boot loader</b>	RedBoot
<b>Operating System</b>	Linux, 2.6.x kernel

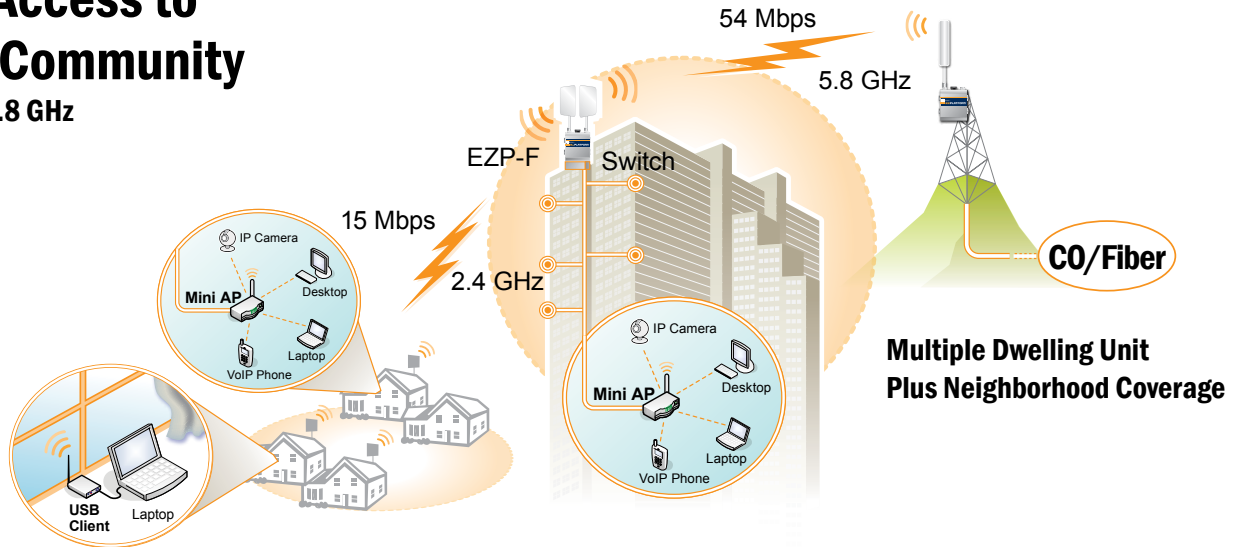


<b>CPU</b>	Intel IXP425 network processor, 533 MHz
<b>Memory</b>	64 MB SDRAM
<b>Storage</b>	16 MB flash
<b>Ethernet interface</b>	Two 10BASE-T/100BASE-TX ports
<b>Serial interface</b>	Two RS-232 ports
<b>Wireless interface</b>	Two Mini PCI Type III slots
<b>LED indicators</b>	Power, WLAN1 status, WLAN2 status
<b>Power</b>	10-48 V DC PoE (Power over Ethernet)
<b>Power consumption</b>	25 W, maximum
<b>Dimensions</b>	8 x 7.5 x 2.5 in
<b>Weight</b>	7 lb
<b>Operating temperature</b>	-20 °C to +70 °C, non-condensing
<b>Enclosure</b>	NEMA 4, ruggedized and weatherproof
<b>Mounting</b>	Wall mount, pole mount



# Remote Access to Isolated Community

– EZP-F® 2.4/5.8 GHz



## WiFi Hot Spot

