

## Quick Installation

This guide will demonstrate how to make a connection between wired and wireless network by using **Station/Bridge**. First of all, you have to prepare an **802.11b Access Point** connecting to local network. You will be guided to install the Access Point on your network step by step. If you encounter problems during the installation, refer to your **User Manual**.

## Introduction

The **Station/Bridge** is compliant with the IEEE 802.11b (DSSS) specifications. Small as the sparrow is, it possesses all its internal organs.

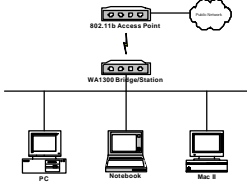


Figure 1: Network Connection

## Package Contents

The following items should be included:

- One **Station/Bridge** Mode Unit (the device).
- One Power Adapter.
- One User's Manual.
- One Quick Installation Guide.

If any items listed above are damaged or missing, please contact your dealer immediately.

## System Requirements

- One or more PCs (desktop or notebook) with Ethernet interface.
- TCP/IP protocol must be installed on all PCs.
- Network cables. Use standard 10/100BaseT network (UTP) cables with RJ45 connectors.
- All wireless devices must be compliant with the IEEE 802.11b specifications.
- Microsoft Internet Explorer 5.0 or later or Netscape Navigator 4.7 or later.

## Installing Your Station/Bridge

Take windows 98 platform for example



Figure 2: Installation Diagram

In the following example, we set the SSID (Network name) of your Access Point to **'wirelesslan'** under this environment.

## Installation Instructions

- Use straight LAN cable to connect the Station/Bridge with a hub of the wired network.
- Connect the power adapter to the power jack on the Station/Bridge.

- The Power LED (the right one) should be on when the power adapter is connected.
- Use straight LAN cable to connect the PC with the wired network.
  - Power on one of the PCs and login if you are asked to. When you reach the desktop, click **Start** on the taskbar, select **Settings**, and then select **Control Panel**.
  - Double-click the **Network** icon. You will see a dialog box shown below.



Figure 3: Network Configuration

- Select the **TCP/IP** protocol for your network card.

- g) Click **Properties**. You will then see a dialog box shown below.



Figure 4: IP Address

- h) Ensure your TCP/IP settings are correct as follows.

To use static IP address, select **Specify an IP address**. Type **192.168.1.200** in the **IP address** field and **255.255.255.0** in the **Subnet Mask** field. The **IP address** must be 192.168.1.x. The value of x should be ranged from 1 to 254, except 99, and is never used by other PCs. The default IP of Station/Bridge is 192.168.1.99.

- i) Click **OK** again. Windows may copy files to your computer, and then you will be asked to restart your PC. Click **Yes** to restart your computer and initiate the new settings. If you aren't asked, manually restart the computer to ensure the system has used the IP address you just specified.

- j) Open your Web browser and type "**HTTP://192.168.1.99**" in the **Address** field. Then press **Enter**.

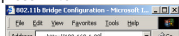


Figure 5: Enter Web Address

- g) A logon dialog box will appear. The default **User Name** and **Password** are both **root**.

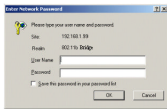


Figure 6: User name/Password Dialog Box

- k) After you click **OK**, the Setup screen is shown like the Figure 7.



Figure 7: Setup Screen

- m) Click the **Configuration** tab and enter texts in the **Network name** field, **wirelesslan**, for example. After setting up **Network name**, click **Save**, **Reboot**, and then **OK** in sequence. The **Configuration** screen is shown as the following figure.

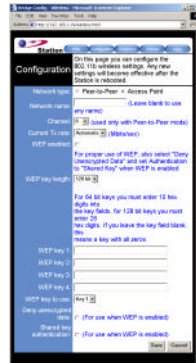


Figure 8: Configuration Screen

For the purpose of security, you can enable **WEP** function. Follow the steps below (take 64 bit encryption for example):

- n) Click the **Configuration** tab, and then select the **WEP enabled** function.
- o) Choose **64 bit** on the right side of the **WEP key length** field. Type 10 hex digits into the key box at the right of the **WEP key 1** field.
- p) Choose **Key 1** on the right side of the **WEP key to use** field.
- q) Select the **Deny unencrypted data** option.
- r) Choose **Shared Key** in the **Authentication** field.
- s) Click **Save**, **Reboot**, and then **OK** in sequence.

Once you have configured all of the PCs on your network with appropriate value of Network name and WEP key, the Station/Bridge setup and installation are complete.

For instructions on other advanced configuration, refer to your **User Manual**.