

Quick Installation

This guide is for you to make a connection between wired and wireless network. You will learn how to install the **Access Point** on your network step by step. If you have any problems during the installation, please refer to your **User Manual**.

Introduction

Congratulations on the purchase of your new access point. The access point is compliant with the IEEE 802.11b (DSSS) specifications. Small as the sparrow is, it possesses all its internal organs.

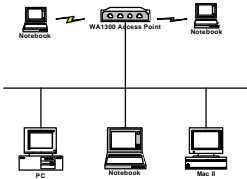


Figure 1: Network Connection

Package Contents

The following items should be included:

- One Access Point Unit (the device).
- One Power Adapter.
- One User's Manual.
- One Quick Installation Guide.

If any items listed above are damaged or missing, please contact your dealer immediately.

System Requirements

- One or more PCs (desktop or notebook) with Ethernet interface.
- TCP/IP protocol must be installed on all PCs.
- Network cables. Use standard 10/100BaseT network (UTP) cables with RJ45 connectors.
- All wireless devices must be compliant with the IEEE 802.11b specifications.
- Microsoft Internet Explorer 5.0 or later or Netscape Navigator 4.7 or later.

Installing Your Access Point

Take Windows 98 platform for example



Figure 2: Installation Diagram

Installation Instructions

- Use straight LAN cable to connect the **Access Point** with a hub of the wired network.
- Connect the power adapter to the power jack on the **Access Point**.
The Power LED (the right one) should be on when the power adapter is connected.
- Use straight LAN cable to connect the PC with the wired network.
- Power on one of the PCs and login if you are asked to. When you reach the desktop, click **Start** on the taskbar, select **Settings**, and then select **Control Panel**.
- Double-click the **Network** icon to open the **Network** dialog box as below.

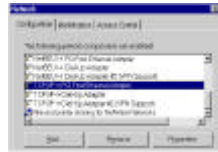


Figure 3: Network Configuration

- Select the **TCP/IP** protocol for your network card.

- o) Click **Properties**. You will then see a dialog box shown below.



Figure 4: IP Address

- p) Ensure your TCP/IP settings are correct as follows.

To use static IP address, select **Specify an IP address**. Type **192.168.1.200** in the **IP address** field and **255.255.255.0** in the **Subnet Mask** field. The **IP address** must be 192.168.1.x. The value of x should be ranged from 1 to 254 and is never used by other PCs.

- q) Click **OK** again. Windows may copy files to your computer, and then you will be asked to restart your PC. Click **Yes** to restart your computer and initiate the new settings. If you aren't asked, manually restart the computer to ensure the system has used the IP address you just specified.
- r) Open your Web browser and type "**HTTP://192.168.1.90**" in the **Address** field. Then press **Enter**.



Figure 5: Enter Web Address

- s) A logon dialog box will appear. The default **User Name** is root and **Password** is root. Put **User Name** and **Password** and Click **OK**.



Figure 6: User name/Password Dialog Box

- t) After you click **OK**, the **Setup** screen is shown like the following figure.



Figure 7: Setup Screen

- g) Click the **Configuration** tab and type texts in the **Network name** field, **wirelesslan**, for example. After setting the **Network name**, click **Save**, **Reboot**, and then **OK**.

The **Configuration** screen is shown as the following figure.



For the purpose of security, you can enable the **WEP** function. Follow the steps below (take 64 bit encryption for example):

- h) Click the **Encryption** tab, and then select the **WEP enabled** function.
- i) Choose **64 bit** on the right side of the **WEP key lengths** field. Type 10 hex digits into the key box at the right of the **WEP key 1** field.
- j) Choose **Key 1** on the right side of the **WEP key to use** field.
- k) Select the **Deny unencrypted data** option.
- l) Choose **Shared Key** in the **Authentication** field.
- m) Click **Save**, **Reboot**, and then **OK** in sequence.
- n) The **Configuration** screen is shown as the following figure.



Once you have configured all of the PCs on your network with appropriate values of **Network name** and **WEP key**, the **access point setup** and **installation** are complete.

For instructions on **MAC address filtering** or other advanced configurations, refer to your **User Manual**.