

Warranty Policy

Limited Warranty

All Rights Reserved. Copyright 2006 Teletronics International, Inc.
2 Choke Cherry Road, Rockville, MD 20850 Tel: 301.309.8500 Fax: 301.309.8851

All Teletronics' products warranted to the original purchaser to be free from defects in materials and workmanship under normal installation, use, and service for a period of one (1) year from the date of purchase. Under this warranty, Teletronics International, Inc. shall repair or replace (at its option), during the warranty period, any part that proves to be defective in material of workmanship under normal installation, use and service, provided the product is returned to Teletronics International, Inc., or to one of its distributors with transportation charges prepaid. Returned products must include a copy of the purchase receipt. In the absence of a purchase receipt, the warranty period shall be one (1) year from the date of manufacture.

This warranty shall be voided if the product is damaged as a result of defacement, misuse, abuse, neglect, accident, destruction or alteration of the serial number, improper electrical voltages or currents, repair, alteration or maintenance by any person or party other than a Teletronics International, Inc. employee or authorized service facility, or any use in violation of instructions furnished by Teletronics International, Inc.

This warranty is also rendered invalid if this product is removed from the country in which it was purchased, if it is used in a country in which it is not registered for use, or if it is used in a country for which it was not designed. Due to variations in communications laws, this product may be illegal for use in some countries. Teletronics International, Inc. assumes no responsibility for damages or penalties incurred resulting from the use of this product in a manner or location other than that for which it is intended.

IN NO EVENT SHALL TELETRONICS INTERNATIONAL, INC. BE LIABLE FOR ANY SPECIAL, INCIDENTAL OR CONSEQUENTIAL DAMAGES FOR BREACH OF THIS OR ANY OTHER WARRANTY, EXPRESSED OR IMPLIED, WHATSOEVER.

Some states do not allow the exclusion or limitation of special, incidental or consequential damages, so the above exclusion or limitation may not apply to you. This warranty gives you specific legal rights, and you may also have other rights that vary from state to state.

RMA Policy

Product Return Policy

It is important to us that all Teletronics' products are bought with full confidence. If you are not 100% satisfied with any product purchased from Teletronics you may receive a prompt replacement or refund, subject to the terms and conditions outlined below.

IMPORTANT: Before returning any item for credit or under warranty repair, you must obtain a Return Merchandise Authorization (RMA) number by filling out the RMA form. Products will not be accepted without an RMA number. All products being shipped to Teletronics for repair/refund/exchange must be freight prepaid (customer pays for shipping). For all under warranty repair/replacement, Teletronics standard warranty applies.

30-Day full refund or credit policy:

- I. Product was purchased from Teletronics no more than 30 day prior to the return request.
- II. All shipping charges associated with returned items are non-refundable.
- III. Products are returned in their original condition along with any associated packaging, accessories, mounting hardware and manuals. Any discrepancy could result in a delay or partial forfeiture of your credit.

Unfortunately Teletronics cannot issue credits for:

- I. Products not purchased from Teletronics directly. If you purchased from a reseller or distributor you must contact them directly for return instructions.
- II. Damaged items as a result of misuse, neglect, or improper environmental conditions.
- III. Products purchased direct from Teletronics more than 30 days prior to a product return request.

To return any product under 1 year warranty for repair/replacement, follow the RMA procedure.



Quick Product Guide

Mechanical Specifications:

Chassis Dimension (W x D x L): 200mm x 70mm x 120mm
7.87" x 2.75" x 4.7"

Board Specifications:

Network Standard: IEEE 802.11a, IEEE 802.3, IEEE802.3x
Ethernet: 10/100BaseT Ethernet, Auto MDI/MDI-X
Network Architecture Infrastructure: Ad-Hoc, MAC, CSMA/CA
Status Indicators: Power, Wireless LAN, Ethernet LAN, and RSSI
Push Button: Reset to Default Button

Radio Specifications:

IEEE 802.11a 5GHz Mini PCI Card
Specification Description: Chipset MAC/BB
Processor Atheros AR5213 RF Chip Atheros AR5112
Power Consumption: Tx: ~1000mA Rx: ~400mA
Antenna Connector: N-type Female
Output Power: 19 dBm (+/- 3dB) @ 6/9/12/18/24 Mbps (200mW)
18 dBm @ 36 Mbps
17 dBm @ 48 Mbps
16 dBm @ 54 Mbps

Receiver Sensitivity: -87 dBm @ 6 Mbps
-70 dBm @ 54 Mbps

RF Channels: Total of 13 Non-Overlapping Channels (5 Channels: 5.725 ~ 5.850 GHz)
Data Security: WPA/WPA2, 64/128 bit WEP
Management: Web and SNMP based Management

DC Power Input: Includes 48VDC Adapter and PoE Injector with surge protection, IEEE 802.3af compliant

Frequency Band: 5.725 - 5.850 GHz
Operating Environment: -40 °C to + 70 °C
Enclosure: Silver Powder Coated Cast Aluminum

TT™ 5800X

IEEE 802.11a
GATEWAY



TT™5800X FEATURES

Ultra high 500mW Output power in OFDM modulation (w/optional M58 amp), Web & SNMP based Management EZManager, Adjustable Transmit Power TX, Intra-BSS Traffic Blocking (Layer 2 Isolation), Configurable ACK Timeout for long distance, Turbo-mode for high data rate (108 Mbps), Ruggedized waterproof and all weather enclosure, WDS available in AP mode, Powerful QoS for Real Time Applications, Dynamic Bandwidth Control Management.

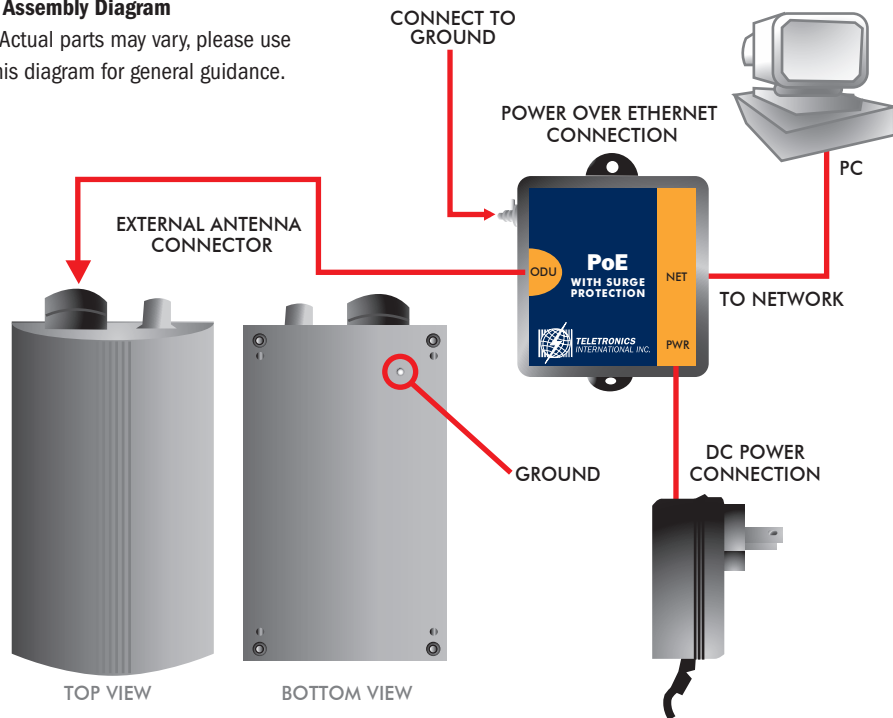
Package List

1. TT™5800X 802.11a PCBA (1)
2. IEEE 802.11a Mini PCI Card (1)
3. Power Over Ethernet Injector (1)
4. 48VDC Power Adapter (1)
5. Ethernet Cable (2)
6. Waterproof RJ-45 Connector (1)
7. Mounting Hardware (1)
8. User Quick Guide

Assembly Instruction

I. Assembly Diagram

*Actual parts may vary, please use this diagram for general guidance.



Quick Installation

Always double check for any missing parts before deployment. Next step is to set up the computer Ethernet interface for configuring the TT5800X.

Web Control Interface

Default IP Address in Client Bridge Mode (SU): **192.168.3.1**

Default IP Address in Access Point Mode (AP): **192.168.1.1**

Default Login/Password: Nothing needs to be typed in for login and password authentication.

For detailed instructions on how to configure the TT5800X, please refer to www.teletronics.com/Support.html

Hardware Installation

Follow the procedure below to install your TT5800X device:

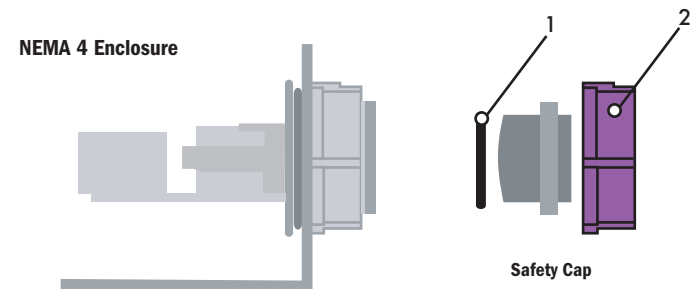
1. Select a suitable place on the network to install the TT5800X. For best wireless reception and performance the external antenna should be positioned within Line of Sight from the AP with proper alignment.
2. Connect the TT5800X to the ODU side of the PoE Injector via a straight Ethernet cable (Cat-5), then connect the NET side of the PoE Injector to either a computer or an Ethernet Switch.

Note: The TT5800X now supports MDI/MDI-X and no longer require the use of cross over cable to connect directly with a computer.

3. Connect the 48VDC power adapter to the power jack on the PoE injector to power on the TT5800X.

Check the LEDs on the TT5800X to confirm if the status is okay. At this point the PWR and LAN LEDs should be on green. The WLAN light should light up once the unit is associated wirelessly with another wireless device. However at this point the unit is still in factory default setting so do not the alarmed that the WLAN light doesn't light up.

Waterproof RJ-45 Connector Assembly



Re-using items (1) and (2) from the safety cap, assemble the waterproof RJ-45 connector as shown below:

