



EZMIMO

Item #: 11-501
All-in-One EZMIMO with
18dBi MIMO Antenna



Limited Warranty Policy

1. All Teletronics products have 1 Year Warranty Period. (Except List of Antennas Attached)
2. Our Warranty Period does not cover physical damages, misuse of the product, and natural disasters.
3. International customers have 60 business days return policy, in order to receive full refund for the items purchased. Only if the item is consider to be brand new unit. (Unopened Items)
4. Domestic customers have 30 business days return policy, in order to receive full refund for the items purchased. Only if the item is consider to be brand new unit. (Unopened Items)
5. Within the 30/60 business days, for all used items, there will be a restocking fee charge (0-45%). Depending on the condition of the item. Restocking Fee might vary.
6. All original materials must be returned in good resalable condition.
7. No refund, exchange or full credit will be issued after the 30/60 business day return policy.
8. Out-of Warranty items are repaired or replaced only with the customer's prior approval. Labor charges and freight will vary based on the condition of defective item.
9. Advanced Replacement Cases, must be issued within the 1 Year Warranty Period
10. All RMA numbers automatically expire 30 days after date of issuance.
11. Teletronics reserves the right to refuse any RMA shipment that does not come with RMA Case Number or an invalid RMA Case Number.

Terms and Conditions

1. REPAIR WARRANTY: All warranties are void if Teletronics finds that the product has been abused, physically damaged or altered in any way without prior written authorization. 2. OUT OF WARRANTY PRODUCT: Out-of-Warranty Products are repaired only with the customer's prior approval. For Out-of- Warranty repair charges, please contact us at 301.309.8500 x136 or rma@teletronics.com. 3. PACKAGING: Please clearly mark the RMA number on the outside of the packaging. Damage or loss of goods during shipment is the sole responsibility of the customer. Product must be returned in original carton or in packaging of equal or greater quality. 4. RMA NUMBER: Any returned product without a valid RMA number or no RMA number will be refused and returned to the sender. RMA numbers are only valid for 30 days from the date they are issued. Please write the RMA number on the box in bold letters using permanent marker on at least two different sides of the box. 5. PRODUCT: Ship only the product(s) specified on the original RMA request and includes any additional items. Any additional products will require a new RMA number. 6. SHIPPING COST: The customer is responsible for the cost of shipment to Teletronics and we will be responsible for the cost of shipment back to the customer. Ship to: Teletronics International, Inc. 2 Choke Cherry Road, Suite 100 Rockville, MD 20850 USA. 7. SHIPPING METHOD: All the repaired products will be shipping back to customers via UPS/FedEX Ground service. For International customers via Economic. 8. ADVANCED REPLACEMENT: If you are requesting Advanced Replacement for the defective product, you must provide us with a valid credit card number as a guarantee. Please Note: Advanced Replacement charges will be applied to the customer's credit card, if the defective product is not received by Teletronics within 21 business days. 9. RMA REFUND: Customer is required to provide the original invoice/receipt to request RMA credit.

Applying for an RMA Case Number

1. Go to: <http://www.teletronics.com/RMA.html>
2. Download the RMA Form; fill it out the entire fields with the appropriate product information
3. Email the word file to rma@teletronics.com
4. Within 1 Business Day, you will receive an email with the RMA Receipt Confirmation
5. Package the defective unit with the suitable material
6. Identify the outside of the box with the RMA Case # given in the RMA Receipt
7. Ship the package to: Teletronics - RMA Dept 2 Choke Cherry Rd, Suite 100. Rockville, MD - 20850 USA

NOTE: Advanced Replacement Cases must be issued before 4:30pm (Eastern Time), in order to ship the package the same business day. *Specifications Subject to Change without Prior Notice!

Quick Start Guide

Package Contents

- EZMIMO
- PoE DC injector
Power adapter 24V for PoE DC injector
- Waterproof RJ-45 connector
- Mounting hardware
- Quick start guide

Technical Specifications

Processor	Atheros AR7130 (300MHz)
System Memory	32MB or 64MB DDR SDRAM
NOR Flash	8MB
Surge Arrestor	Supported
Watch Dog Timer	Yes
Certificate	FCC, CE
RoHS compliance	Yes
Connector	RJ-45 All Weather
Power Consumption	12V/2A ~ 24V/1A DC
POE	Passive 48V POE
Reset Button	Power Reset Reset to Factory Default
LED	Power, Ethernet, Wireless
Operating Temperature	-58°F to +158°F
Operating Humidity	5 ~ 95%

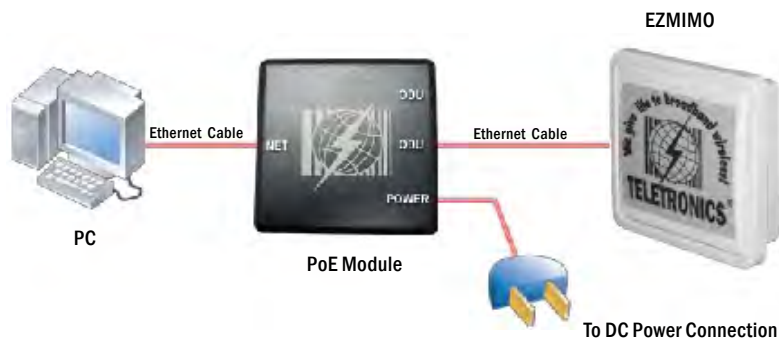
Radio Specifications

Chipset	Atheros AR9220
Host Interface	PCI Interface v2.3 (Type III-A Mini PCI form factor)
Power Consumption	7W
Antenna Connector	2 x MMCX
Data Rate IEEE 802.11n:	20MHz 1Nss: 65Mbps @ 800GI, 72.2Mbps @ 400GI (Max.) 2Nss: 130Mbps @ 800GI, 144.4Mbps @ 400GI (Max.) 40MHz 1Nss: 135Mbps @ 800GI, 150Mbps @ 400GI (Max.) 2Nss: 270Mbps @ 800GI, 300Mbps @ 400GI(Max.)
Frequency Range IEEE 802.11a/n:	5.150 ~ 5.350GHz, 5.470 ~ 5.725GHz, 5.725 ~ 5.850GHz (US & Canada) 5.150 ~ 5.350GHz, 5.470 ~ 5.725GHz, 5.725 ~ 5.875GHz (Europe) 5.150 ~ 5.250GHz, 5.250 ~ 5.350GHz, 5.470 ~ 5.725GHz (Japan)
Modulation	OFDM: BPSK, QPSK, 16QAM, 64QAM
Certificate	FCC, CE
RoHS Compliance	Yes

Antenna Specifications

Frequency Range	5400MHz ~ 5900MHz
V.S.W.R.	≤1.5
Return Loss	≥-20db
Antenna Type	Unidirectional Antenna
Gain	18dBi
Polarization	Vertical and Horizontal
Maximum Power	50W
AZ/EL Beamwidth	25°/32°
Impedance	50Ohm
Inside Connector	MMCX Male * 2
Wind Survival	<150 MPH
Radome Material	ABS + PC
Mounting	Pole Mount
RoHS Complaint	Yes
Dimension	9.0 x 9.0 x 2.8 inches
Weight	7 lbs

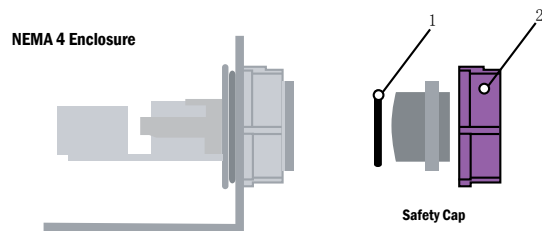
Hardware and Connection Setup



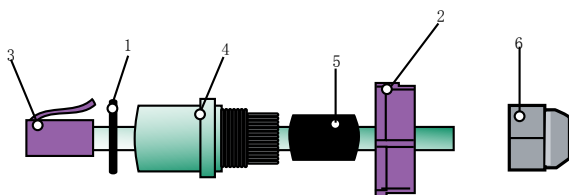
If you are planning to install the EZMIMO outdoors, you need to assemble the weatherproof the RJ-45 connector. To do so, follow these steps:

1. Remove the existing 8P8C connector from the Ethernet cable.
2. Insert the elements in the Ethernet cable in the order shown below.
3. Crimp on the provided metallic 8P8C connector to the Ethernet cable.
4. Attach the resulting assembly to the Ethernet port of the EZMIMO and tighten the threads.

Waterproof RJ-45 Connector Assembly



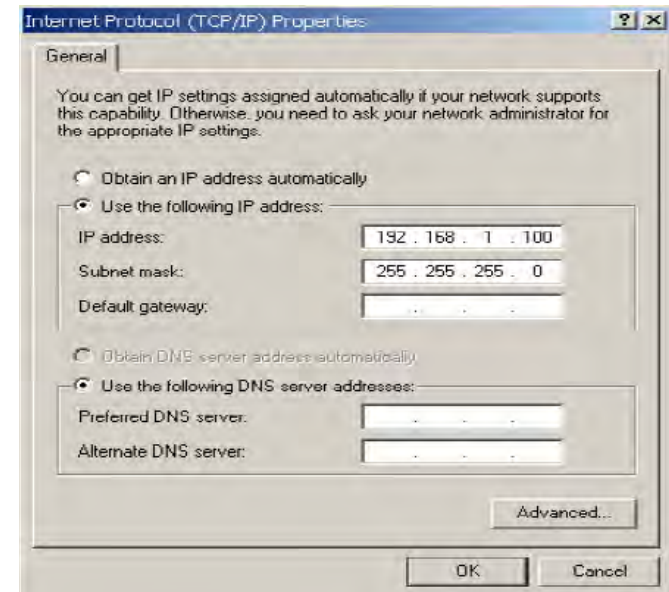
Re-using items (1) and (2) from the safety cap, assemble the waterproof RJ-45 connector as shown below:



Logging in to the Web Configuration Interface

To access the EZMIMO you need to configure your computer to be in the same subnetwork as the EZMIMO:

1. Power on EZMIMO and wait for the unit to finish booting (may take up to min).
2. Open the Control Panel (Start Control Panel).
3. Open Network Connections.
4. Open Local Area Connection (or the connection you will be using for the EZPlatform™).
5. Go to Properties Internet Protocol (TCP/IP) and select 'Use the following IP address'. Configure the IP settings as follows:
IP address: 192.168.1.100
Subnet mask: 255.255.255.0
6. Click on 'OK' in the Internet Protocol (TCP/IP) Properties dialog box.
7. Click on 'OK' in the Local Area Connection Properties dialog box.



To access the web configuration interface, do the following:

1. Open a web browser (e.g.: Internet Explorer, Netscape Navigator, Mozilla Firefox, Opera, etc.).
2. In the address bar of the web browser, type the following address:
http://192.168.1.1
Default Login ID & Password: admin/admin